

## CANDI Testing Manual

Please note, make sure the connection between obd adaptor, obd main cable, candi interface and GM tech2 module are both ok.

When start the test, please be sure to connect the power supply with the OBD adaptor only.





2.

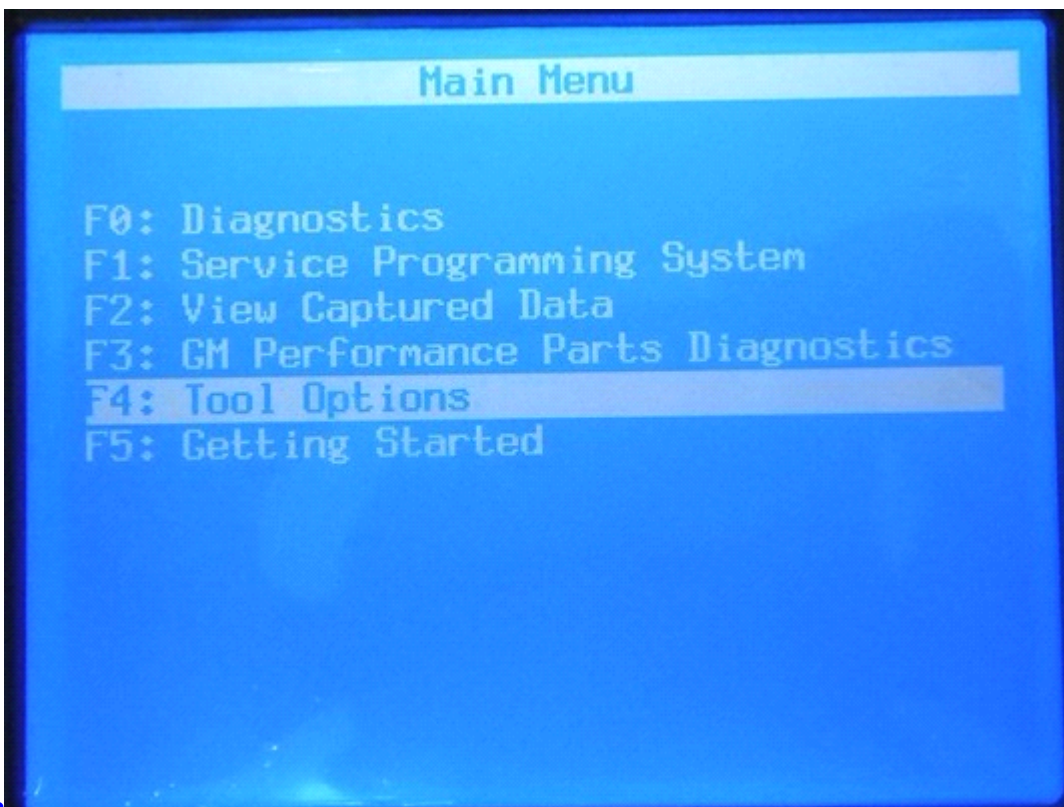


3.

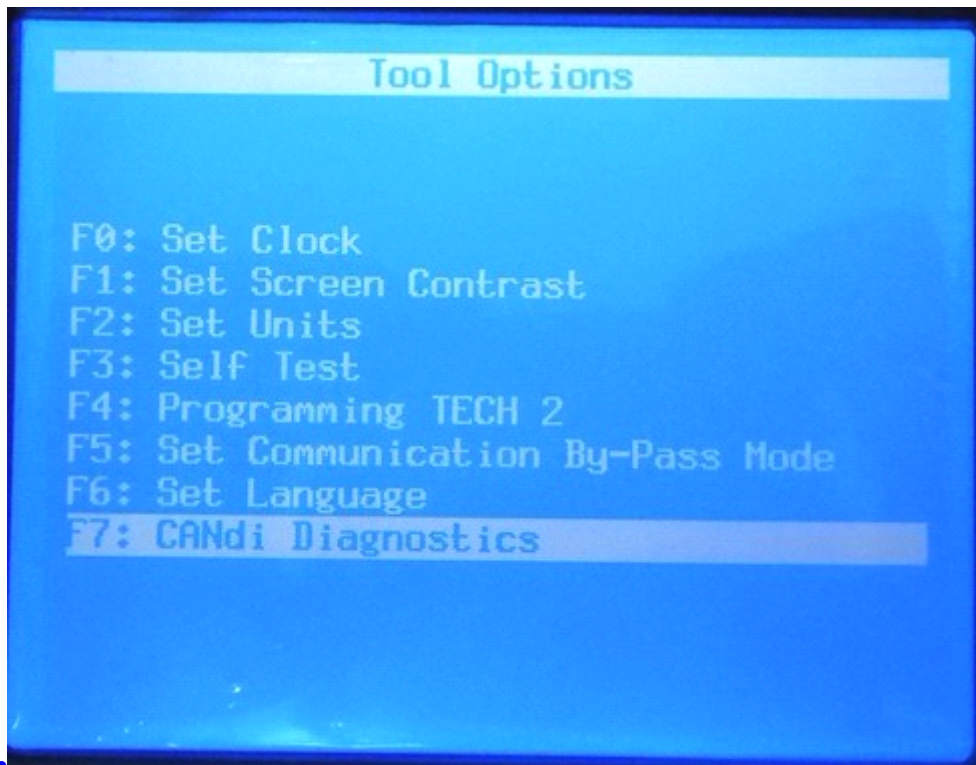




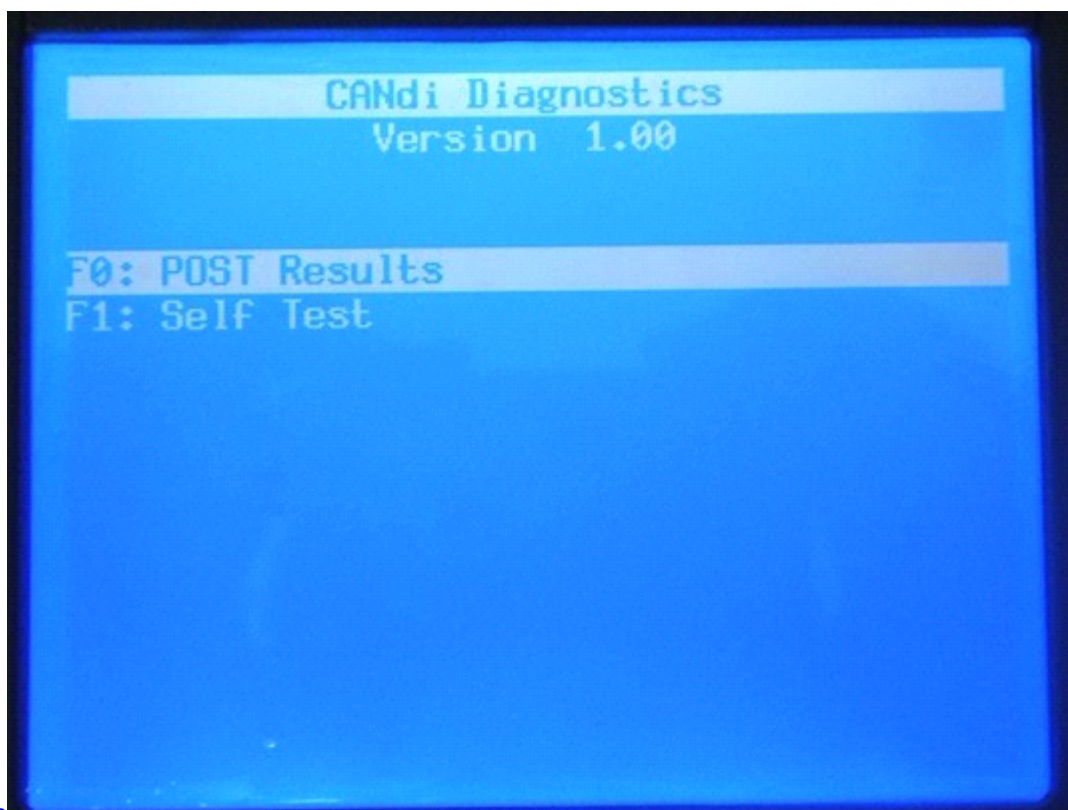
4.



5.



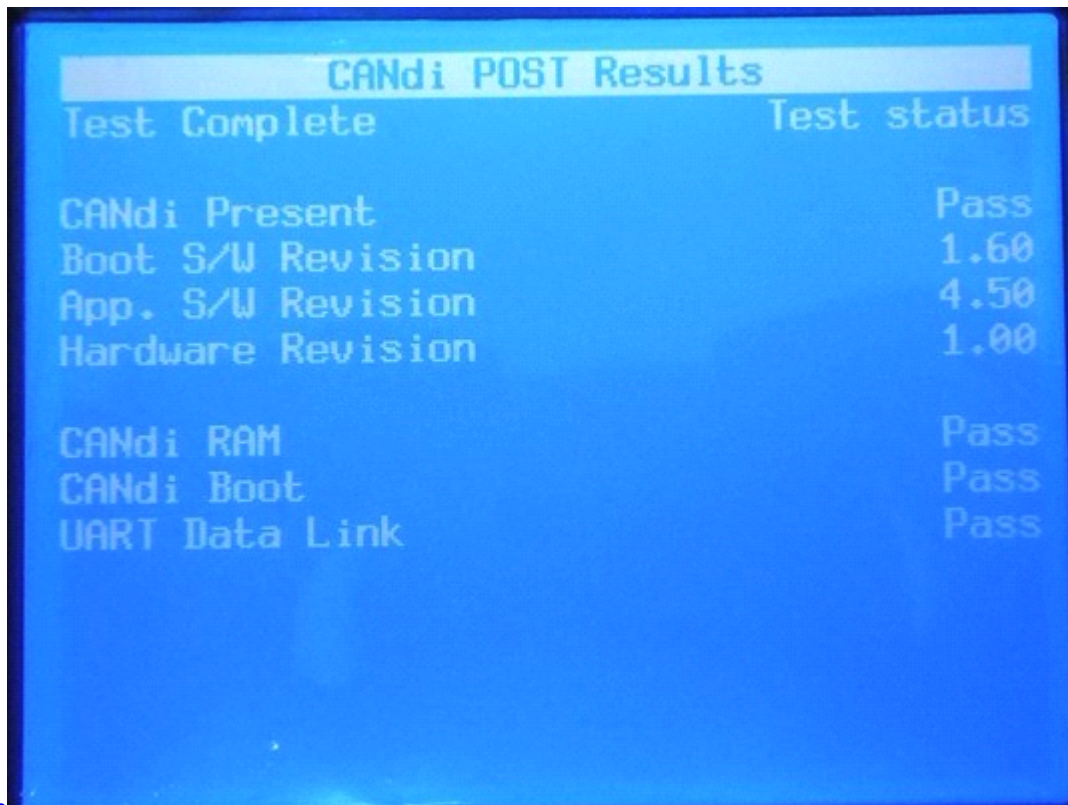
6.



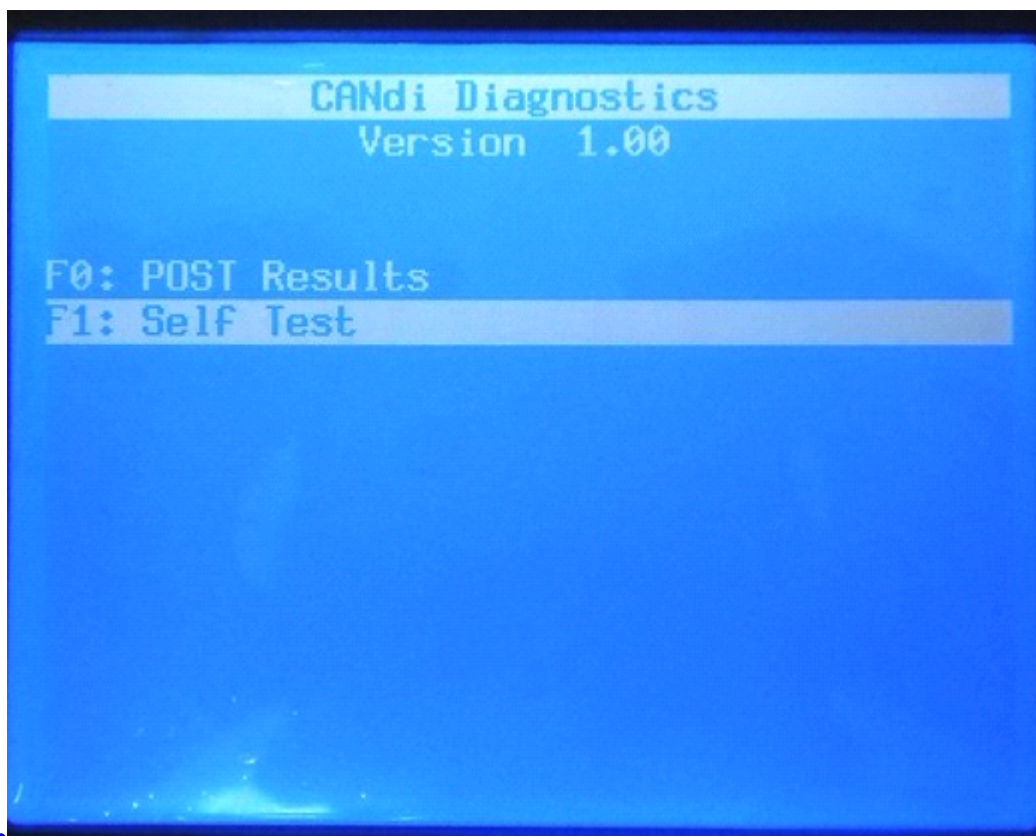
7.



8.



9.



CANdi Self Test Results	
Test Complete	Test status
CANdi Present	Pass
Boot S/W Revision	1.60
App. S/W Revision	4.50
Hardware Revision	1.00
CANdi RAM	Pass
CANdi Boot	Pass
CANdi Resident	Pass
CANdi Application	Pass
Low Speed Data Link	Pass
Med. Spd. Data Link	Pass
High Speed Data Link	Pass

10.

**Attention: There are only 2 results given by the testing as the image8 and image10 showing above.**