



# SVCI ING Instructions

## I. Product overview

SVCI ING is a Nissan/Infiniti/GTR professional diagnostic tools, it covers all the models(1996 years up to now) of Nissan/Infiniti/GTR diagnostic, immobilizer and programming functions. It is bypass password to do immobilizer and it only take about 3 minutes for modules programming which is improved 500% speed than OEM nissan consult 3 plus tool that need to take about 15 minutes for modules programming . Moreover, the smart design of SVCI ING hardware avoids module damage caused by sudden interruption of module programming, which reduces the damage rate of module programming to zero. SVCI ING integrates the Nissan consult 3 plus hardware and built-in security card and GTR card. When using SVCI ING to do immobilizer or GTR vehicles, there is no need to buy a new security card or GTR card. At the same time, SVCI ING has built-in bluetooth function, which enables data transmission through bluetooth. The longest transmission distance of bluetooth can be up to 20 meters.

SVCI ING is a device based on BAOCHI cloud diagnostics software, which is compatible with both Windows and Android platforms for Android phones and personal laptops. In the first use of BAOCHI cloud diagnostic software, you have to register an account with your emails, and then bind SVCI ING hardware devices in BAOCHI software after successfully registering the software. However, a email can only bind one device in software. If there are multiple devices that need to unbind an old device from software and then re-bind a new device in software.

## II. SVCI ING Hardware

### 1. Product appearance description



- 1 OBD Interface (OBDII-16)
- 2 Running LED light(Green light flashing )
- 3 Bluetooth LED light

Blue light flashing: waiting the Bluetooth to connecting  
Blue light turn on : connected to Bluetooth



### 2. Product accessories

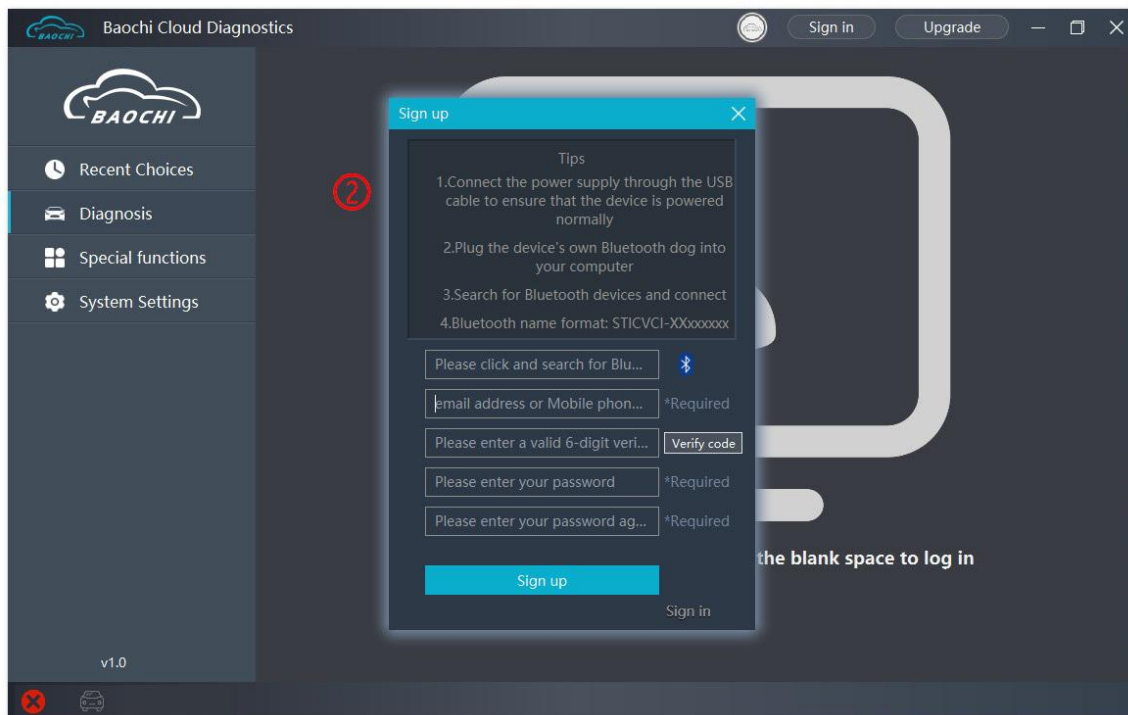
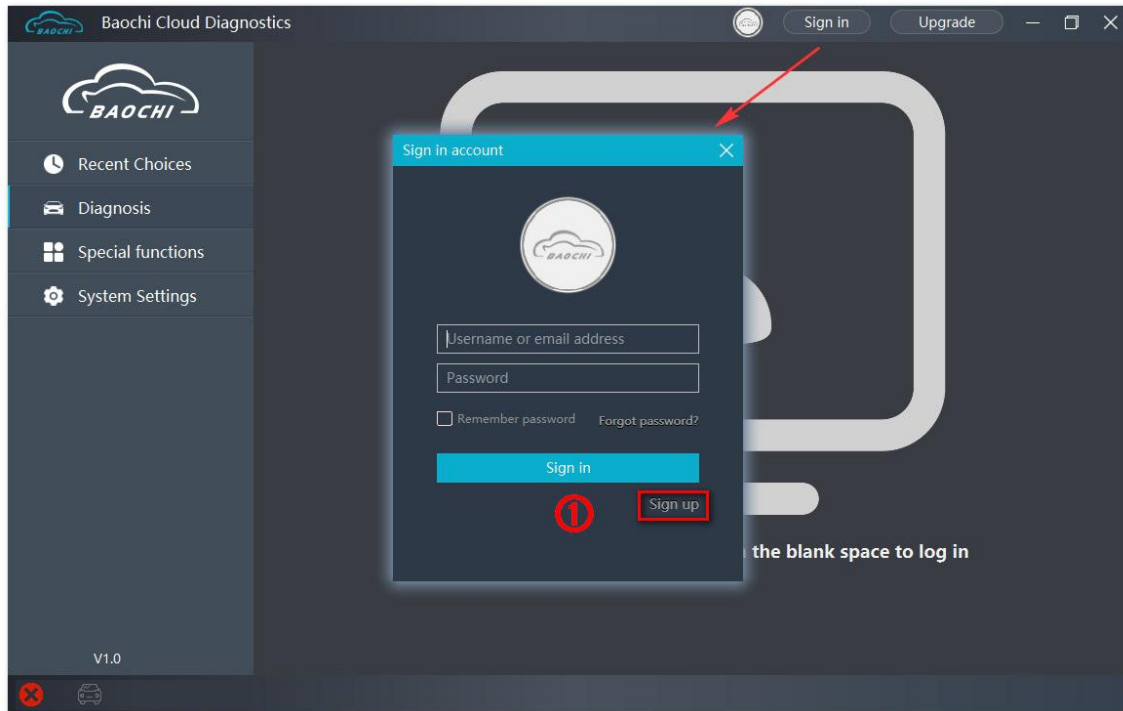
- SVCI ING hardware x 1
- Bluetooth Dongle x 1
- USB cable x 1
- 16-14 PIN connector
- CD x 1

### 3. System Requirements

- Windows: windows7/8/10
- Android: above android v5.1
- Network: above 3G

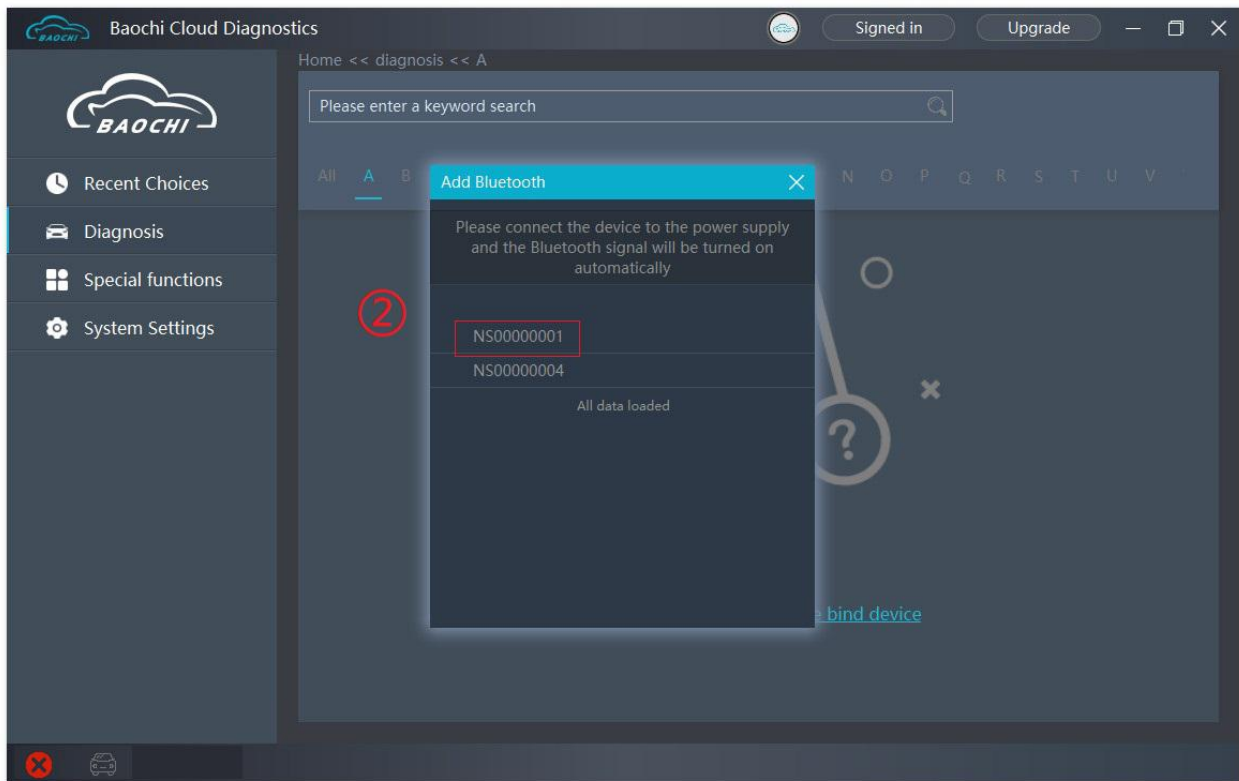
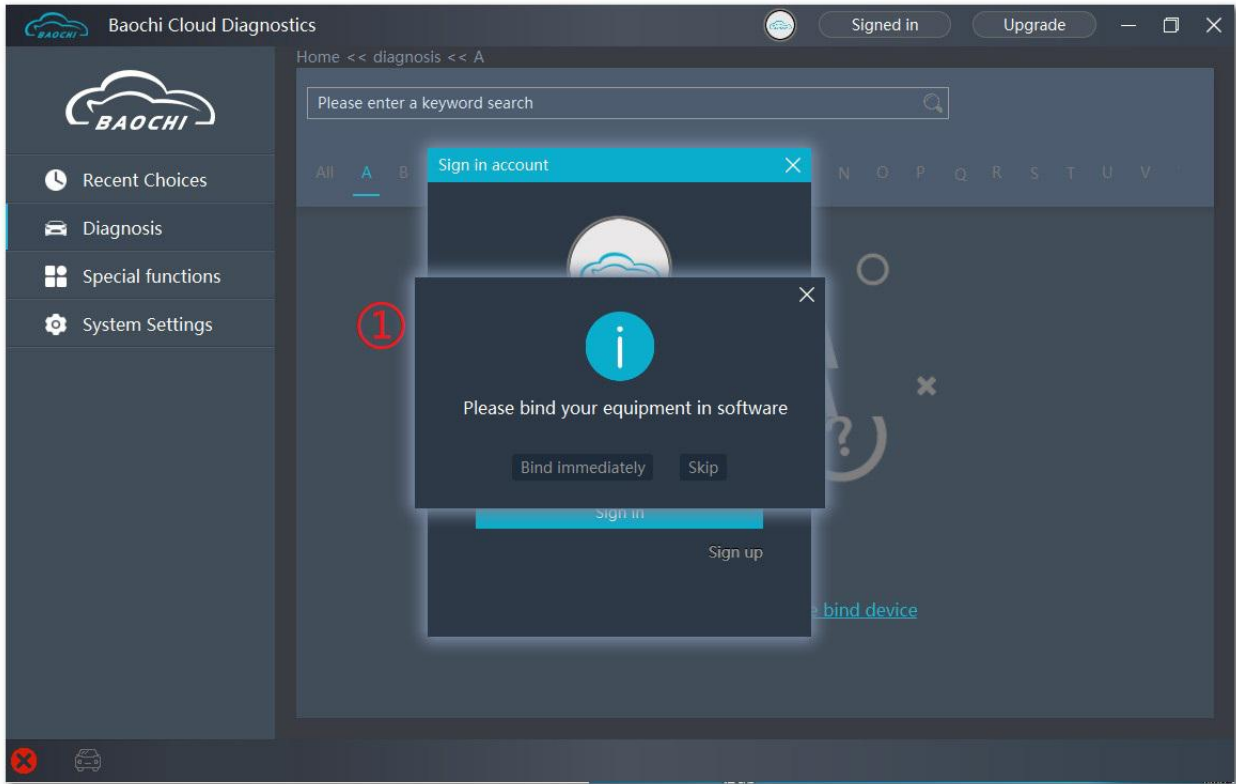
### III. BAOCHI software register,bind and unbind operation on windows platform.

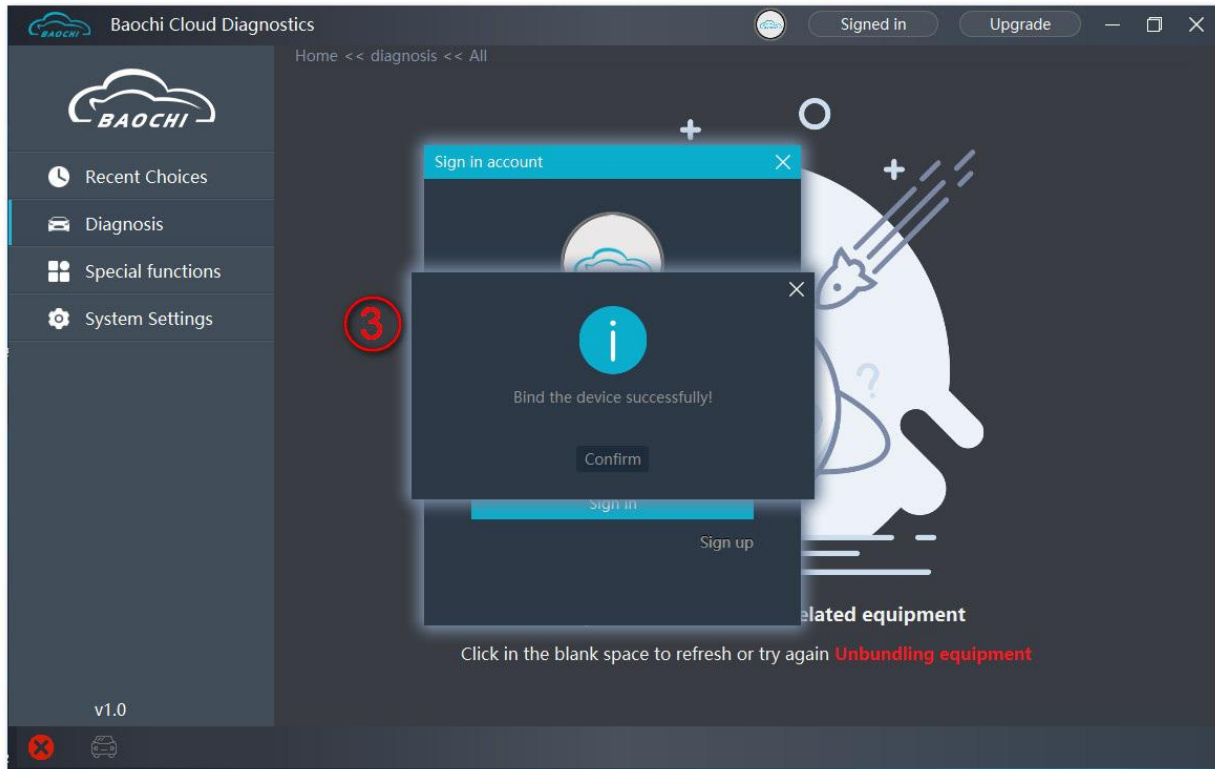
1. First, install BAOCHI cloud diagnostic software on windows system
2. And then, insert Bluetooth Dongle into computer via USB port.
3. Supply power to SVCI ING. There are two ways.
  - 1) Plug SVCI ING into vehicle's OBD port and start the vehicle.
  - 2) Plug SVCI ING into computer or the power supply via USB port.
- 4.Run BAOCHI software and register an account, as shown in the picture below



#### 4. Bind SVCI ING in BAOCHI software on windows platform

After the first successful registration and login, the BAOCHI cloud diagnostic system will prompt you to bind the device, select the device to bind according to the prompt, and then bind it according to the equipment bluetooth id (device serial number), as shown in the figure below.



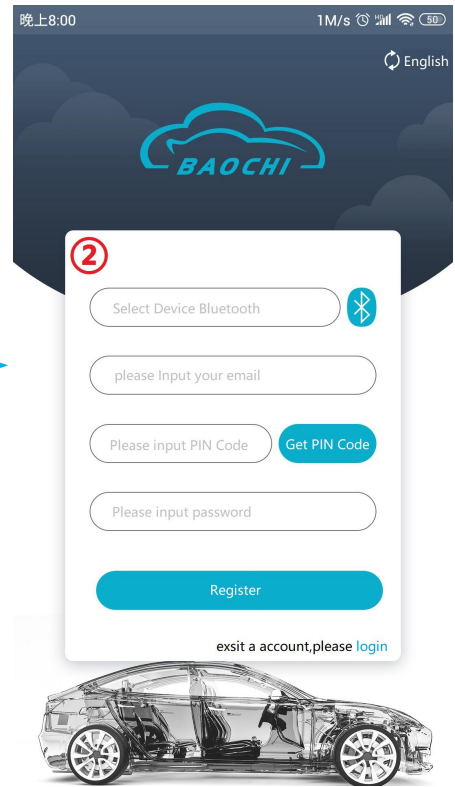
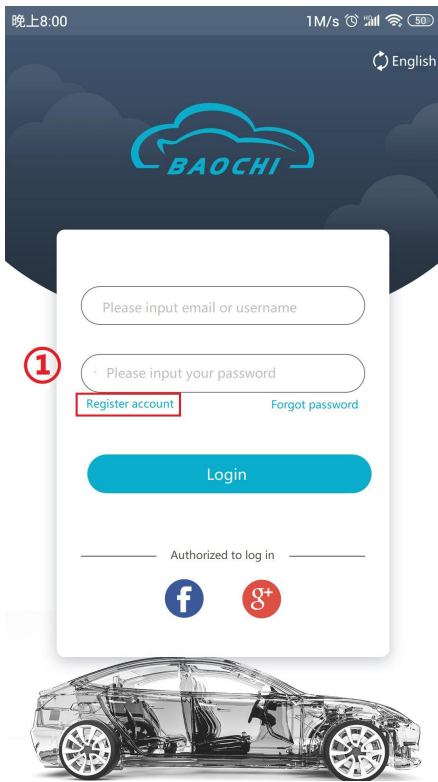


## 5. Unbind SVCI ING from BAOCHI software on windows platform

Log in to baochi cloud diagnostic software, select "system Settings" in the left menu bar, then select "unbind device" and click "confirm to unbind".

## IV. BAOCHI software register,bind and unbind operation on Android platform.

1. install BAOCHI cloud diagnostic software on Android platform, if you have already registered an account in the Windows platform , you can directly enter the account to log in and use it, if you have not registered an account, you need to register an account before you can use it.
2. Supply power to SVCI ING. There are two ways.
  - 1)Plug SVCI ING into vehicle's OBD port and start the vehicle.
  - 2)Plug SVCI ING into computer or the power supply via USB port.
3. Open the bluetooth function of the mobile phone and register your account with the BAOCHI android software for the first time according to the registration process as shown in the figure below. The device will be automatically bound when the registration is completed.



4. Log in BAOCHI could diagnostic software in mobile phone terminal, select "menu" in the menu bar and then select "system Settings" and then click "Bound device" item to unbind or bind a device operation, as shown in the figure below.

