

Born for a locksmith

Transit-baby

Any remote can be added

Just plug in OBD with the Transit-baby

Without assistance ,cost down~~

Attention: Welding technique is required



Package list:
Transit-baby*1(with OBD line),
4 buttons remote*2

Installation methods:

Ex: Mercedes-Benz remote



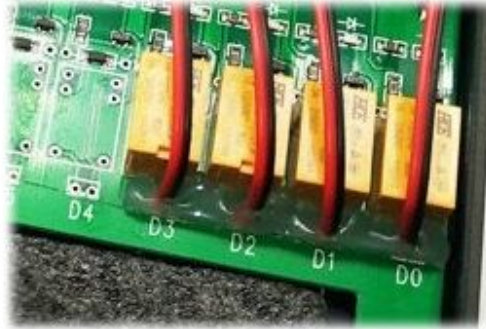
1. Take off the board



2. Uncover the Transit-baby



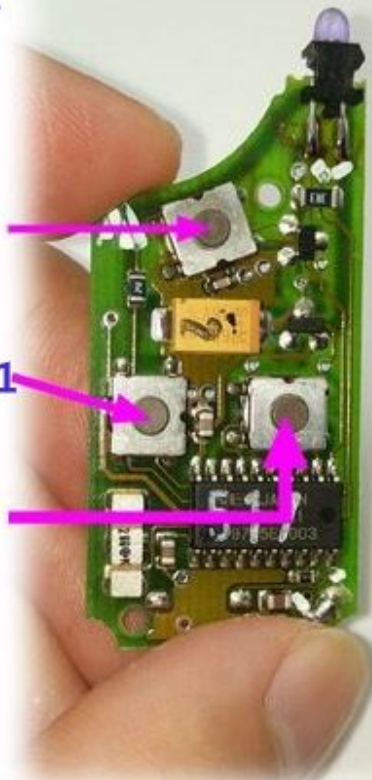
3. Find the location of D0.D1.D2.D3 on Transit-baby



connect "LOCK" button with D0

connect "UNLOCK" button with D1

connect "TRUNK" button with D2



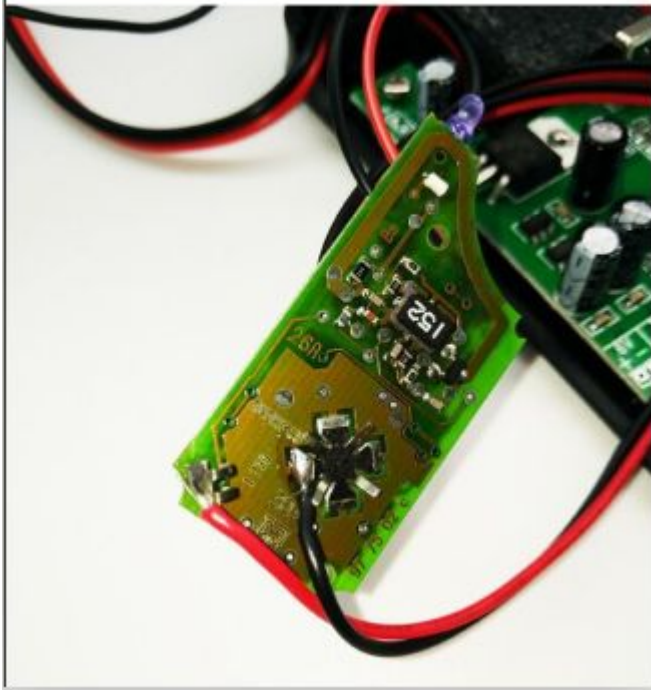
4.Attention:Usually there are two contact points and four contact points,if it`s four contact points,make sure “Welding at diagonal contacts”



5. Locate the power hole and make sure the "Voltage" of the remote board. Then welding the correct position with Transit-baby and remote board with the additional line~(Red line to Positive electrode,black line to Negative electrode)



Positive electrode



6.Lock the cover,put Transit-baby into the car and connect it with OBD(you may connect it with another power resources)



How to program new remote

7. Press and hold **Learning Button**,
Then press any button of
new remote once
(Learning LED is lighting), **Learning Button**
new remote will be programmed

