

1. Introduction

Only AVDI and FVDI can read data of MED17, EDC17 engine control unit, and calculate 6-byte component security data.

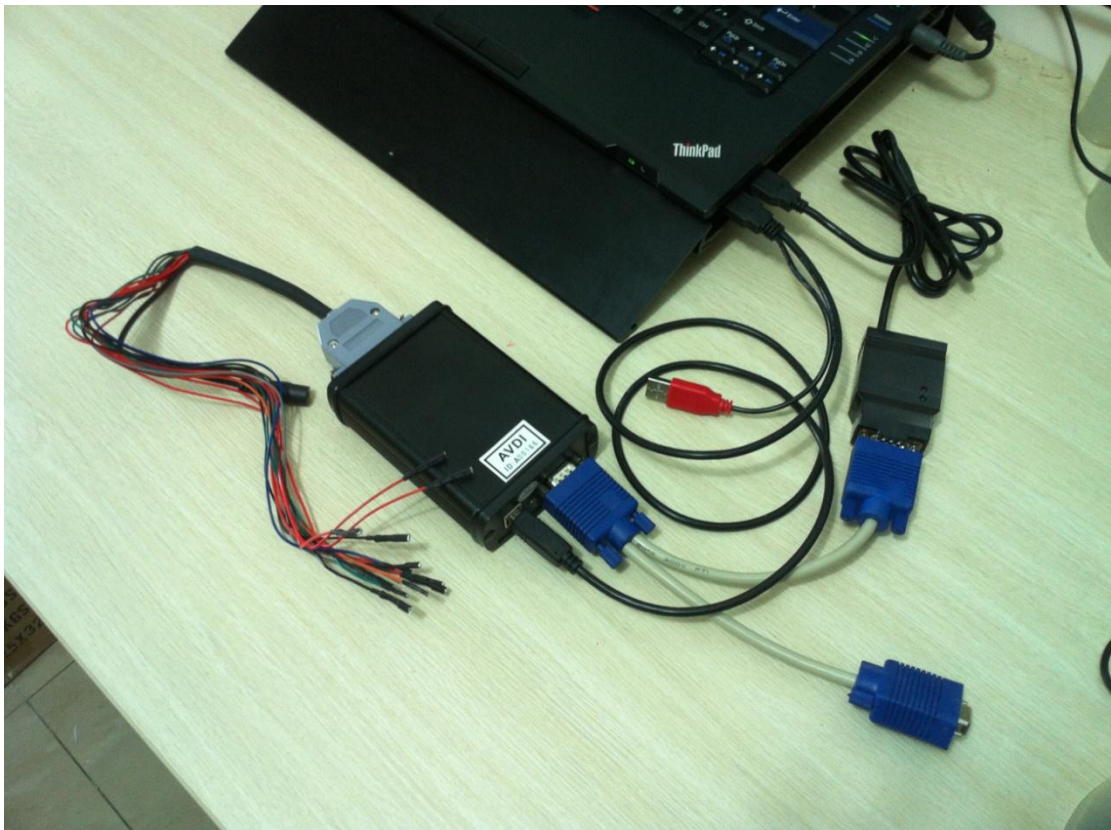
From VAG 18.0 on, FVDI can get 6-byte component security data and PIN by reading EEPROM and flash of MEDC17 ECU.

2. Connections

Device list: PC, FVDI, USB cable, MEDC17 adapter, dongle, welding iron, solders, several 1K ohm resistors, 12V DC power supply.

You can refer to "MEDC17 Pinout.pdf" that shows connections between MEDC17 adapter and MEDC17 ECU.

Picture 1 shows connections between FVDI, PC, dongle, MEDC17 adapter. Your PC must be online.



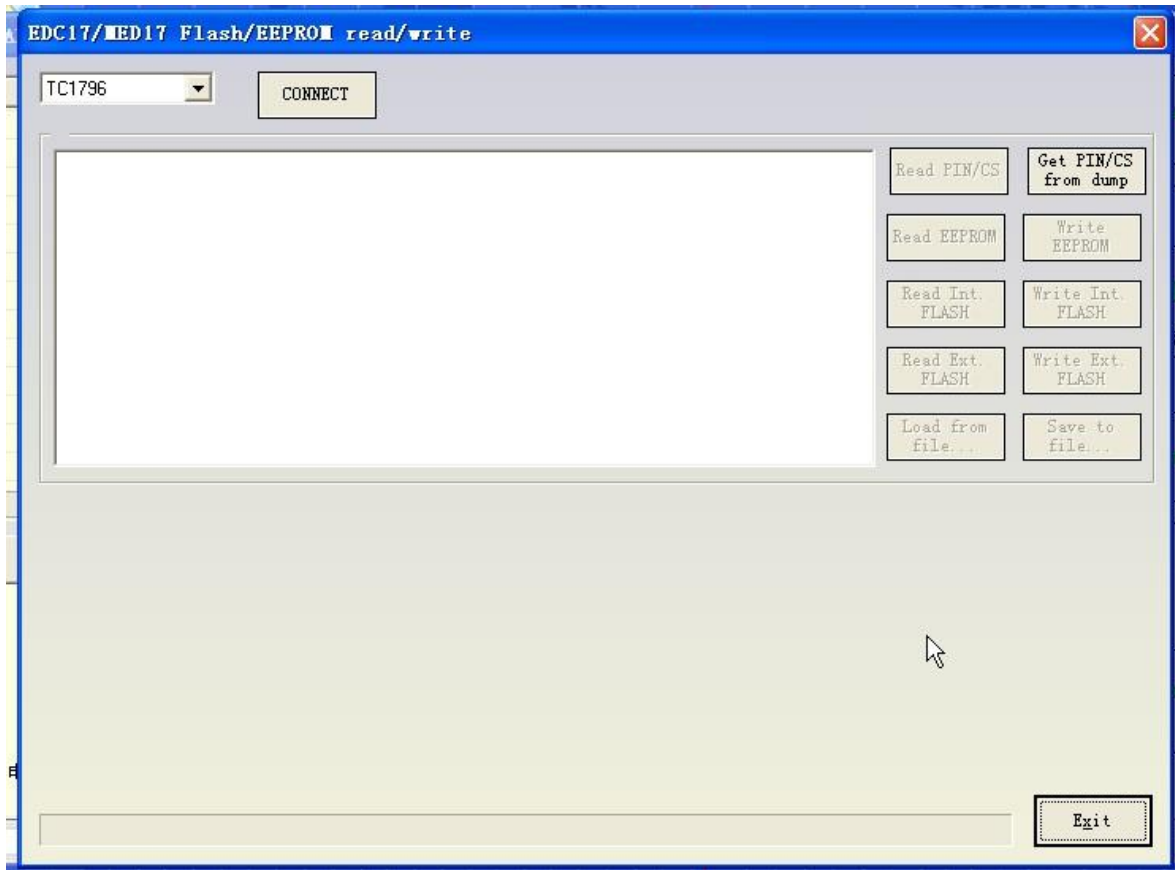
Picture 1 Connections between PC, FVDI, dongle and MEDC17 adapter

3. Operation manual

Step 1: Disassemble MEDC17 ECU, uncover it.

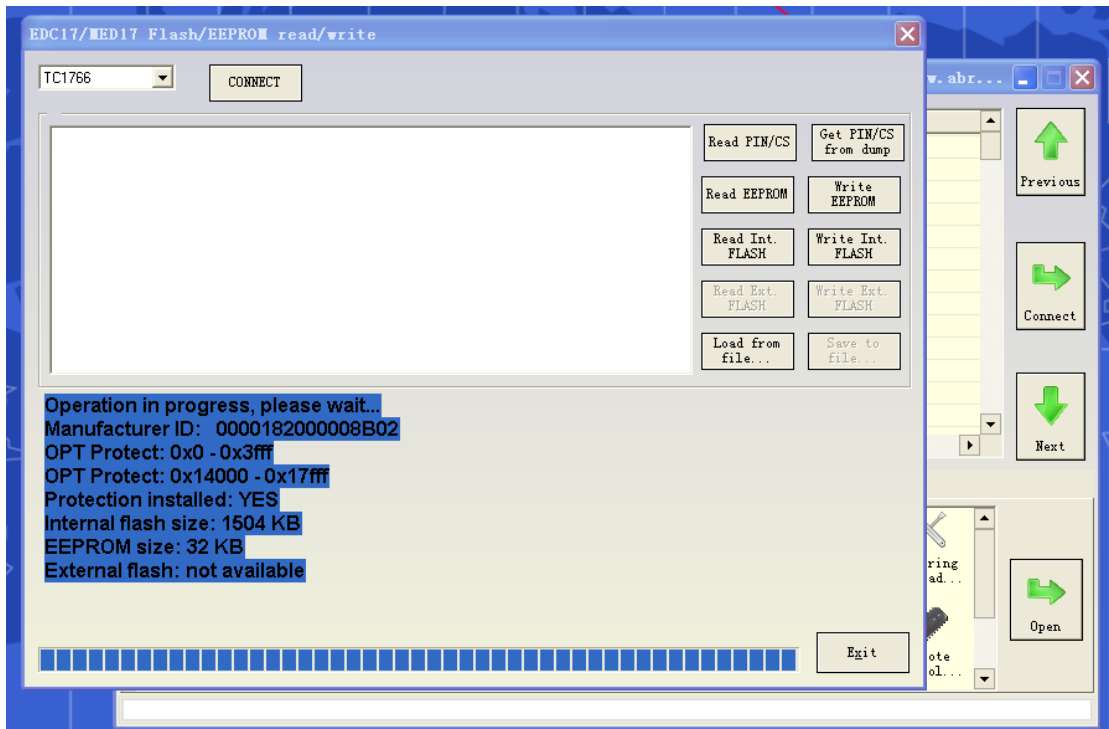
Step 2: Connect MEDC17 ECU under instructions.

Step 3: Connect FVDI with PC, open VAG 18.0, and enter special functions, and select "EDC17/MED17 Engine Control Unit". It's shown as picture 2.



Picture 2 Special function MEDC17

Step 4: Select correct MCU type, and click "CONNECT" as Picture 3.



Picture 3 Connect to MEDC17

Step 5: Read what you want to read.

Step 6: Assemble MEDC17 ECU and install it to vehicle.